



FORD & PARTNERS

ESTATE AGENTS



10 Skyline Mews, High Wycombe, HP12 4FE

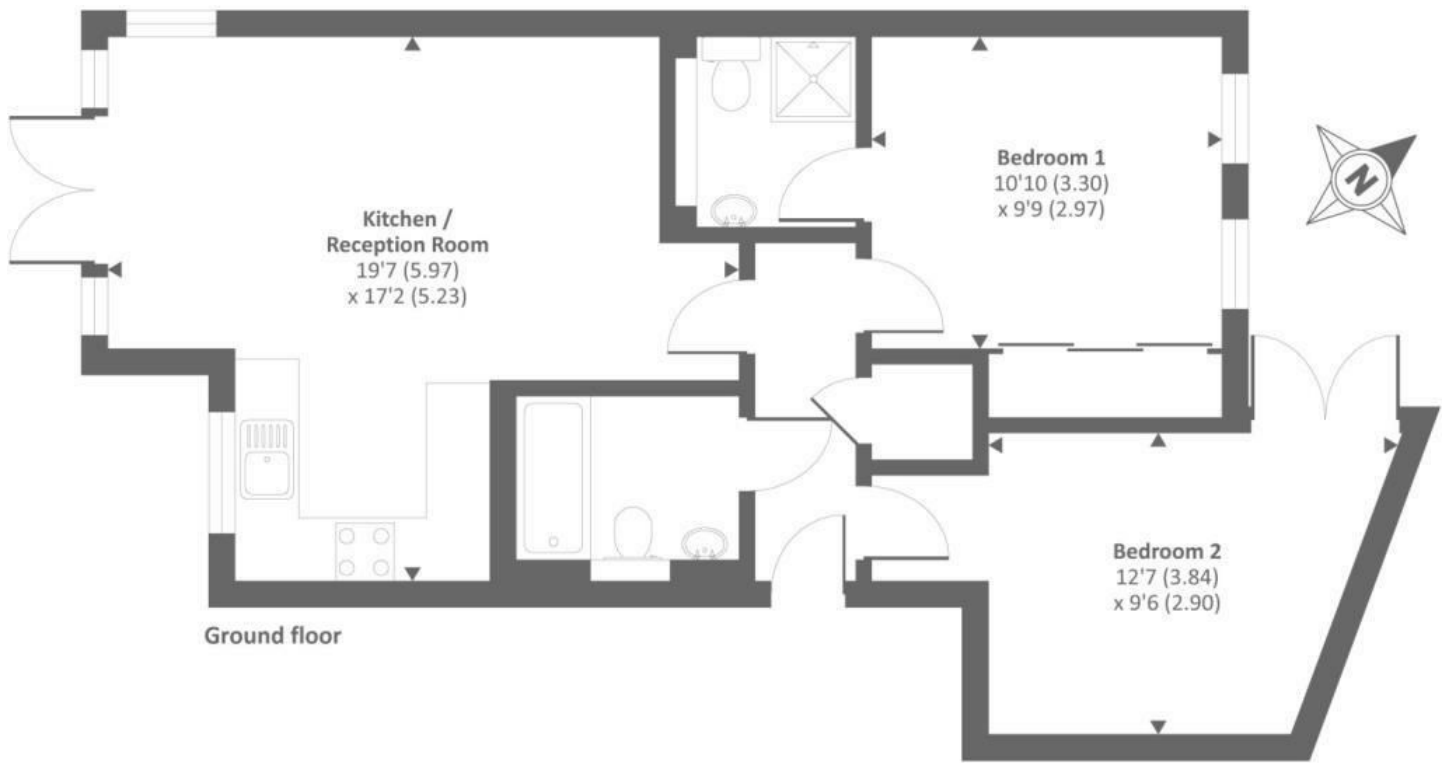
Available Immediately

Situated within a securely gated, tranquil development is this beautifully presented 2-bedroom, 2-bathroom ground floor apartment. The property comprises an entrance hallway, two double rooms, ensuite and family bathrooms, modern kitchen/living room, and private rear terrace and communal gardens.

Local amenities can be found within easy reach; including Junction 4 of the M40 as well as High Wycombe town centre where the Eden shopping centre, numerous restaurants, library, theatre and a mainline train station.

£1,500 Per month

- **Modern Ground Floor Apartment**
- **Two Double Bedrooms**
- **En Suite to Master Bedroom**
- **Open Plan Kitchen/Living Room**
- **Access to Private Rear Terrace/Garden**
- **Patio Area from Lounge**
- **Allocated Parking**
- **Secure Gated Development**
- **Gas Central Heating & Double Glazing**
- **Available Immediately!**



Approx. gross internal floor area 644 SQFT / 59.8 SQM

Energy Efficiency Rating		
	Current	Potential
Very energy efficient - lower running costs		
(92 plus) A		
(81-91) B		
(69-80) C		
(55-68) D		
(39-54) E		
(21-38) F		
(1-20) G		
Not energy efficient - higher running costs		
England & Wales	EU Directive 2002/91/EC	

Environmental Impact (CO ₂) Rating		
	Current	Potential
Very environmentally friendly - lower CO ₂ emissions		
(92 plus) A		
(81-91) B		
(69-80) C		
(55-68) D		
(39-54) E		
(21-38) F		
(1-20) G		
Not environmentally friendly - higher CO ₂ emissions		
England & Wales	EU Directive 2002/91/EC	

